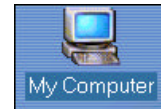


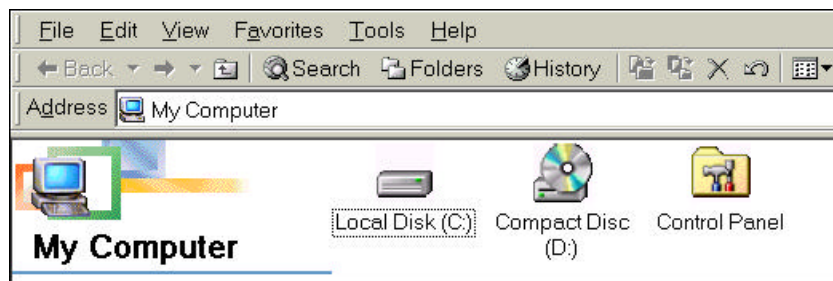
## ***Windows: Finding the Missing Floppy Drive***

If you cannot save to the floppy drive on your computer and you know the floppy disk is not corrupt, you may have a *Windows* driver corruption on your computer.

1. Double-click the **MY COMPUTER** icon located on the desktop.



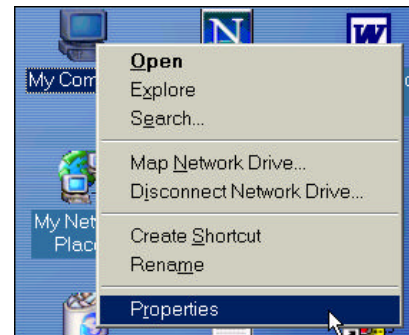
2. If the **3 ½ Floppy (A:) icon** is missing or vanishes after moving your mouse over the icon, there is a corrupt driver on the computer.



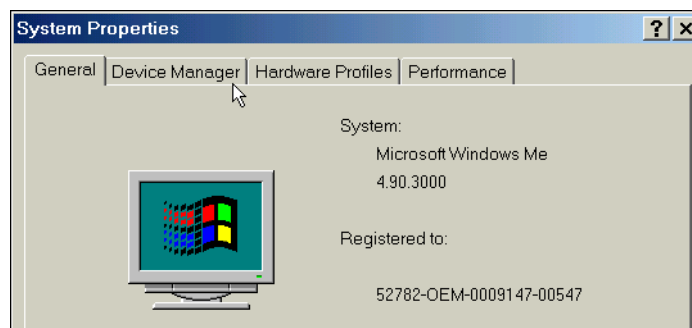
3. Exit the **MY COMPUTER** window by clicking the **X** button located at the top-right of the program window.

4. Right-click on the **MY COMPUTER** icon located on the *Windows* desktop.

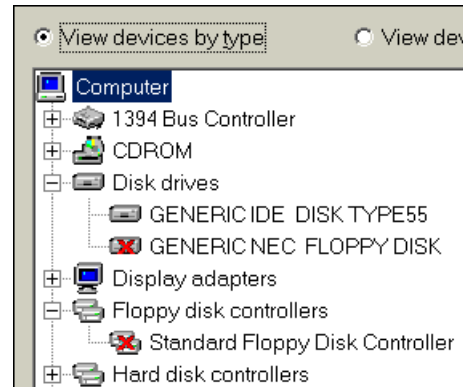
5. Click the **Properties** submenu item.



6. Next, click the **DEVICE MANAGER** tab in the **SYSTEM PROPERTIES** window.



7. If you see **2 red X's** in your list, this computer definitely has this problem. Double-click the **STANDARD FLOPPY DISK CONTROLLER** listing.

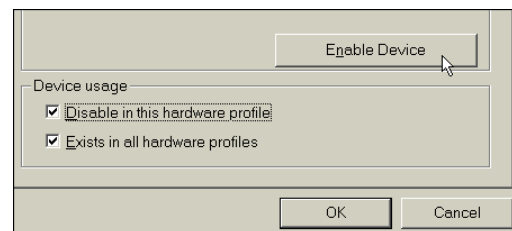


8. Click the checkbox next to **DISABLE IN THIS HARDWARE PROFILE**. Click the **OK button**. We are tricking *Windows* into thinking the drive is not disabled already. Then, we are going to enable the double-disabled device.



9. Double-click the **STANDARD FLOPPY DISK CONTROLLER** listing again.

10. Click the **ENABLE DEVICE button**. Click the **OK button**.



11. Click the **OK button** to close the **SYSTEM PROPERTIES window**.
12. Double-click the **MY COMPUTER icon** located on the desktop to see if the **3 1/2 Floppy (A:)** icon is available. If it is in the listing, the problem has been solved. You can return to normal use of your floppy drive.

