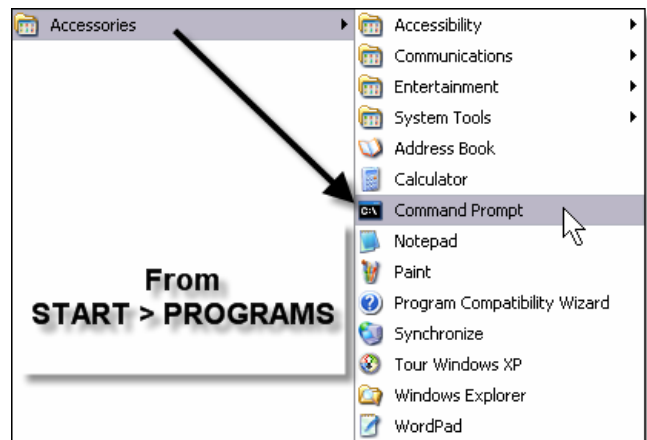


Windows: Renewing & Releasing IP Addresses

If your neighbor can reach the network and/or Internet and you cannot, there is a way to detect if your computer is reaching the school's network/Internet. Using the **IPCONFIG utility** in *Windows* will provide users with a way to release and renew IP addresses on computers, as well as provide users with information relative to the computer's current status on the network.

Windows XP Instructions

1. Click **START > Programs (or All Programs) > Accessories > Command Prompt** from the *Windows* start menu.



```

Microsoft Windows XP [Version 5.1.2600]
(C) Copyright 1985-2001 Microsoft Corp.

C:\Documents and Settings\msues>ipconfig

Windows IP Configuration

Ethernet adapter Local Area Connection:

    Connection-specific DNS Suffix  . : 
    IP Address. . . . . : 130.18.149.87
    Subnet Mask . . . . . : 255.255.254.0
    Default Gateway . . . . . : 130.18.148.1

C:\Documents and Settings\msues>
  
```

2. Type **ipconfig** to view the current status of the computer's IP Address at the command prompt.

3. Type ***ipconfig /release*** to release the computer's IP Address that it currently is assigned by the DHCP server at the command prompt.

```

C:\Documents and Settings\msues>ipconfig /release

Windows IP Configuration

Ethernet adapter Local Area Connection:

    Connection-specific DNS Suffix . . . : 
    IP Address . . . . . : 0.0.0.0
    Subnet Mask . . . . . : 0.0.0.0
    Default Gateway . . . . . :
  
```

4. Type ***ipconfig /renew*** to renew the computer's IP Address via the school's DHCP server at the command prompt.

```

C:\Documents and Settings\msues>ipconfig /renew

Windows IP Configuration

Ethernet adapter Local Area Connection:

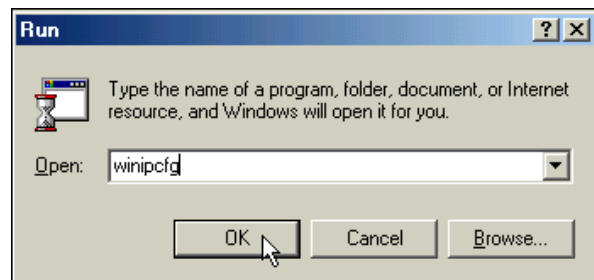
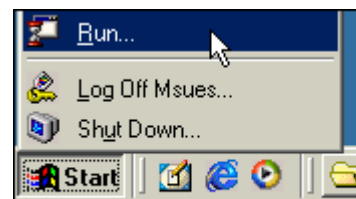
    Connection-specific DNS Suffix . . . : 
    IP Address . . . . . : 130.18.149.87
    Subnet Mask . . . . . : 255.255.254.0
    Default Gateway . . . . . : 130.18.148.1

C:\Documents and Settings\msues>
  
```

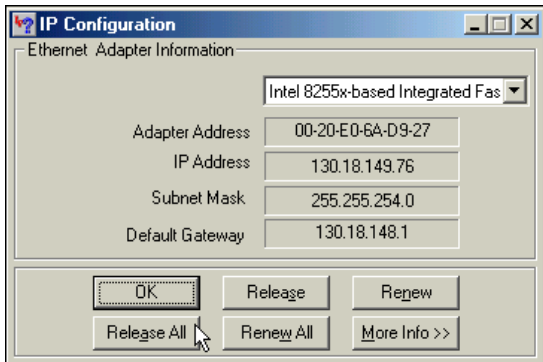
5. Click the **X button** at the top right of the command prompt window to exit the program.

Windows 9x Instructions

1. Click **START > RUN** from the *Windows* start menu.

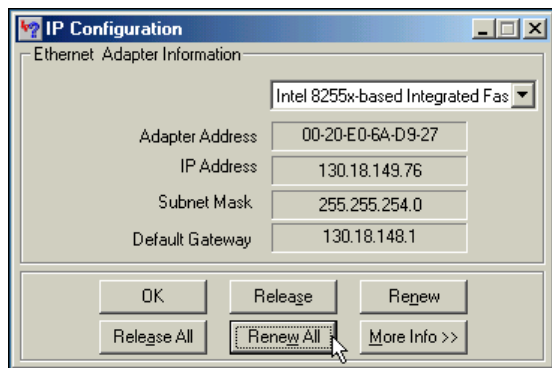
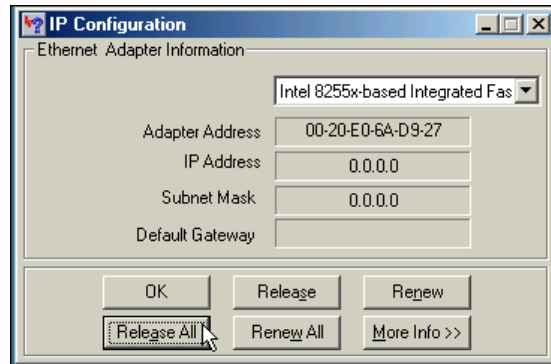


2. In the text box, type ***winipcfg***. This command will bring up the IP Configuration window.



3. The IP Configuration window will show users the *IP Address*, *Subnet*, and *Gateway* currently assigned to network adapters on the computer.

4. To release the IP addresses the computer has obtained, click the **RELEASE ALL** button.



5. To release the IP addresses the computer has obtained, click the **RENEW ALL** button.

6. When you are done, click the **OK** button to close the IP Configuration window.

Contact Information:

Voice: 662-325-5009

Web site: <http://www.create4ms.org>