

Adobe PhotoDeluxe 4.0: Photo Enhancement

Objectives

- Students will learn to retrieve saved digital images.
- Students will learn to manipulate photos that have been stored as digital files.
- Students will learn to enhance images, modify images, create special effects, etc. using digital files of photographs, clipart or sample photos included with the software.

Materials

- Digital files of photographs
- *Adobe PhotoDeluxe Home Edition 4.0*

Steps

1. Open *PhotoDeluxe* by going to the **START > PROGRAMS > ADOBE > PHOTODELUXE HOME EDITION 4.0 > ADOBE PHOTODELUXE HOME EDITION 4.0** or double-click on the **PHOTODELUXE** icon located on the desktop.
2. Click on **GET & FIX PHOTO** button, then **GET PHOTO** icon. Insert your disk into the disk drive, and then click on **OPEN FILE** to open an image that you have saved on your diskette.



3. The **OPEN** dialog box will appear. Click on **LOOK IN** arrow to select the 3½" Floppy A: drive. All saved image names will appear in the box. Click on the file you plan to work with in PhotoDeluxe. Click **OPEN**.

- Click on the **ROTATE & SIZE** button and a drop down menu will appear. Choose the appropriate adjustment option needed including rotating the image left or right 90°, or flipping the image horizontally or vertically. To rotate the image only slightly, click on the image to select it. Use the circular handles at the corner of the image to rotate the image freely. You may resize the image by clicking and dragging the handles. Click the **UNDO** button to compare the photo image. (The **UNDO** button will reverse the immediately previous action).



- To trim or resize your image, click on the **TRIM & SIZE** option at the bottom of the drop down menu, then click on the **TRIM** tab. You have a choice of using a standard size for your image by clicking in the **TRIM SIZE** menu then the **TRIM** tab. To resize the image to a standard size, click on the specific size then click the **TRIM** button to view the selected size. The selected size will be centered in the image. A box with re-sizing handles will appear indicating the selected size. You may move the box if needed by clicking and dragging it or by clicking and dragging the handles. The selected size of the image will remain the same.



6. To trim the image to a specific size, click the **TRIM button**. When the cursor is moved across the image, the arrow becomes a cross-hair tool enabling you to trim the photo image. Click in upper left corner in the image and hold the left mouse button while dragging the box to the desired size. Click **OK** to trim the image. If you make a mistake or wish to re-crop to image, click **CANCEL** or **UNDO** to un-crop the image. Click the **DONE** tab when you are finished. Remember that if you significantly change the size of the image, the quality may suffer. Note the image size in the bar at the bottom of the screen. The image size is generally much larger than you will use in your presentation or printed size.

7. Click on the **ADJUST QUALITY** button to make additional changes to the image. Under the **EXTENSIS INSTANT FIX TOOLS**, the overall quality of the image may be improved by automatically balancing the color, brightness, and contrast as well as sharpen focus and reduce problems caused by fluorescent light. Click the **UNDO** button to compare the photo image. (The **UNDO** button will reverse the immediately previous action).

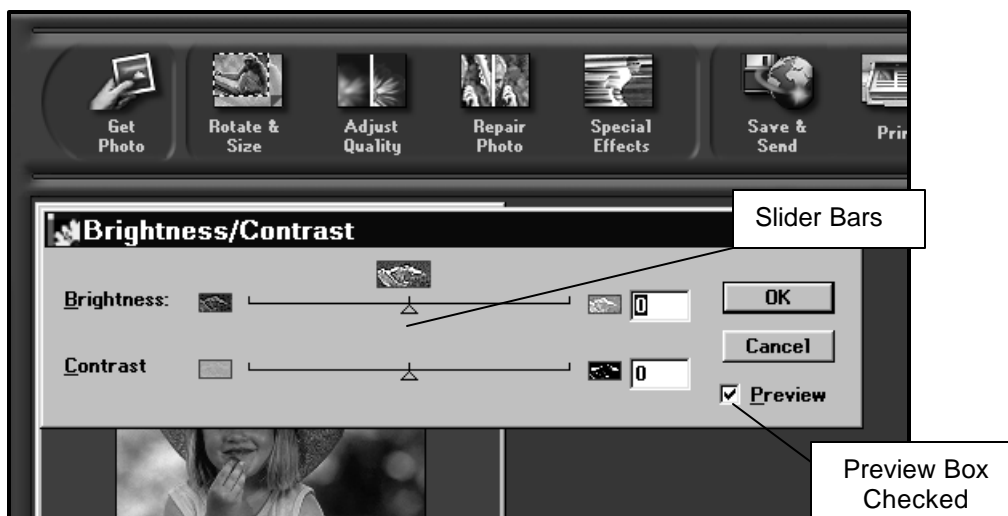


8. To make additional adjustments to the image, click **ADJUST QUALITY > APPEARANCE** in the drop down menu. Click **INSTANT FIX > INSTANT FIX** to automatically adjust the image. To manually adjust the tonal range click **TUNE > BRIGHTNESS/CONTRAST > BRIGHTNESS/CONTRAST**.

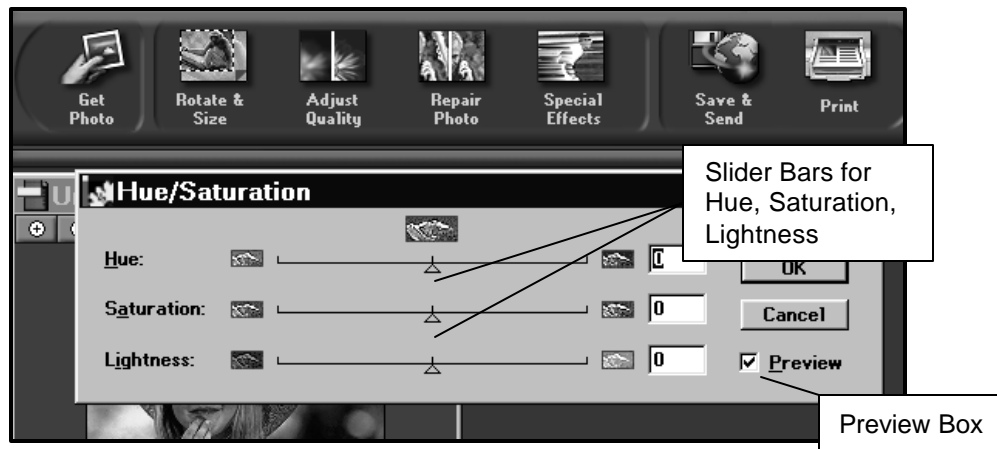
9. Click and drag the slider bars to make changes. When the **PREVIEW box** is checked, you can view the changes as you make them. Click **OK** when you are finished. To make changes to the color levels in the image, click the **ADJUST tab**. Click and drag the slider bars to adjust the tint in the image. Click **OK** when you are finished, and then click on the **DONE tab**.

10. To view different variations of your image and make changes to the overall hue, click on the **ADJUST QUALITY > FIX COLOR > VARIATIONS > VARIATIONS**. The Variations window will appear with the Original and the computer's Current Pick at the top of the window. Six additional variations appear in the bottom of the window. Choose the variation of the image that you like best. Click **OK**. Then click the **DONE tab**.

11. Click the **ADJUST QUALITY > BRIGHTNESS/CONTRAST** in the drop down menu to manually adjust the tonal range of the image. Click and drag the slider bars to make changes. When the **PREVIEW box** is checked, you can view the changes as you make them. Click **OK** when you have finished making changes to your image.



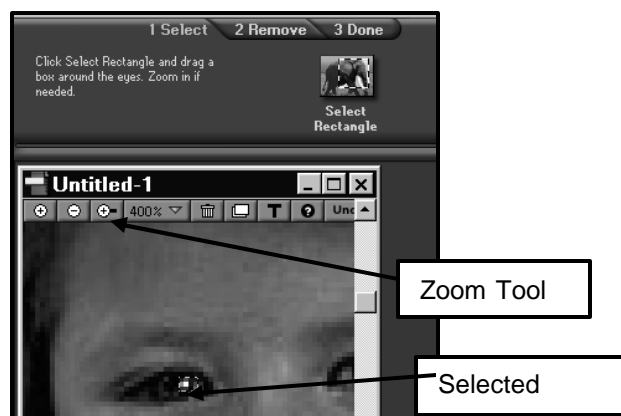
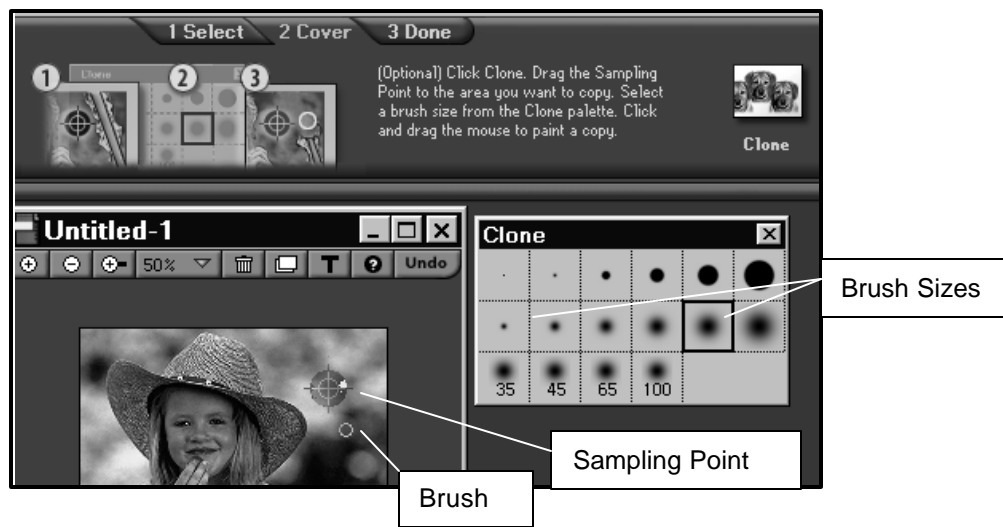
- Click the **ADJUST QUALITY > HUE/SATURATION** in the drop down menu to make changes to the hue, saturation, and lightness of the image. Click and drag each slider bar to make adjustments to the image. Click **OK** when you have finished making changes to your image.



- Under **ADJUST QUALITY > CONVERT to B&W** in the drop down menu, changes your color image to a black and white image.
- The **REPAIR PHOTO** button allows you to make various changes to your image. From the drop down menu, click on **REMOVE ELEMENTS** to remove unwanted elements from your image. Click on the **SELECT > SMART SELECT** button to trace around the element you want to remove. Click to begin tracing and **OK** appears. Trace around the area you wish to remove, clicking the mouse to indicate the area that you wish to remove, ending in the same spot you began. Double click to connect the beginning and ending points. **OK** will appear to indicate that you have “connected” your trace around the image.



15. Click on the **TRASH CAN** icon or press the **DELETE** key on your keyboard to delete the section that you traced.
16. Another way to remove unwanted elements from your image is to cover the area with other background color. Click the **COVER > CLONE** button. The sampling point icon will appear on your image.
17. Move the icon to a section of the photo that you can copy from that section. Choose an appropriate size brush from the Clone toolbox. Click and drag the mouse over the area to be repaired. You are adding color from the sampling point to the area that was erased. If you make a mistake, you may click on the **UNDO** button to revert to the last time the mouse was clicked. Click on the **DONE** tab when you have completed the changes to your image. The Clone tool is also used in the **Retouch Face and Restore Old Photo** sections.



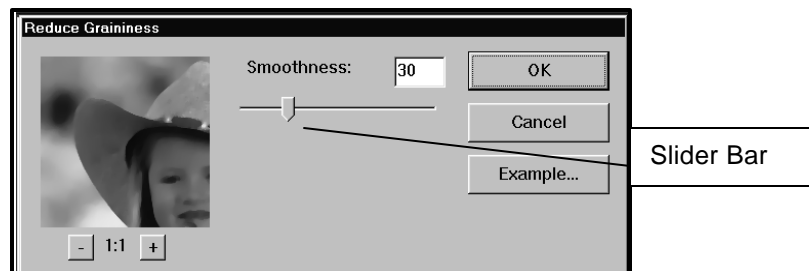
18. To remove red eye from image, click the **REPAIR PHOTO > REMOVE RED EYE** from the drop down menu. Click the **SELECT > SELECT RECTANGLE** and draw a box around the eye area to be changed. (Remember to hold the left mouse button down while dragging around the area.) Zoom in on the specific area using the Zoom tool (small magnifying glass) located in the Image Tool Bar just above the image. Click on the **REMOVE > REMOVE RED EYE** to automatically remove the red eye from the image. Click the **DONE** tab when you are finished.

19. To remove fine lines and dust from your image, click the **REPAIR PHOTO > REMOVE DUST & SCRATCHES** from the drop down menu. Click the **SELECT > SELECT RECTANGLE** to drag a box around the area containing the scratches or dust. Click the **DUST & SCRATCHES > DUST & SCRATCHES** button. Move the Radius and Threshold sliders to make adjustments to the image. The Radius option determines the area size to find differing colors. As you adjust this option, the image gets blurry. Use the smallest radius that eliminates the defects. Increase the Threshold gradually until it is as high as possible without displaying the defects.

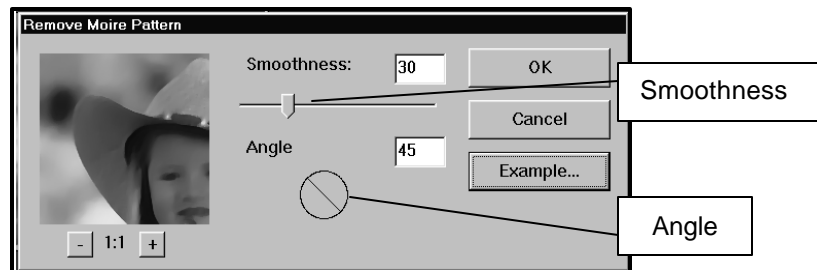


Note: Click the **Preview** box on to see the changes as you make adjustments. Click **OK** when you have completed the desired changes. Click the **DONE** tab to finish.

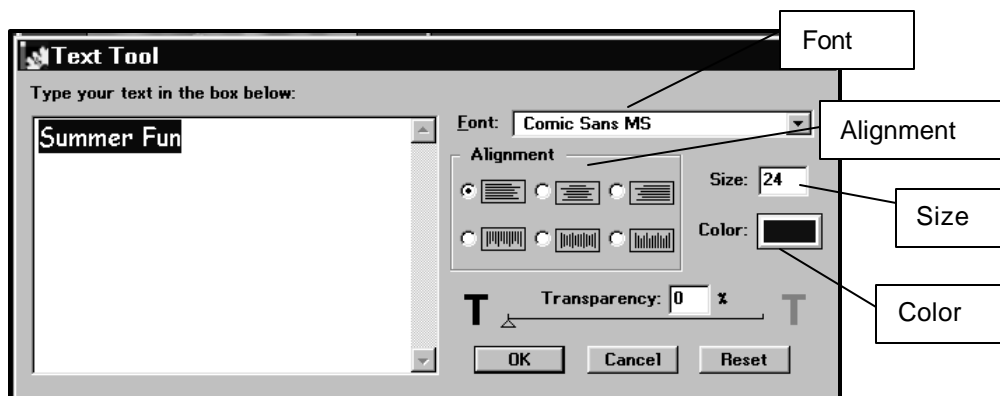
20. To remove noise (graininess) from digital images, click the **REPAIR PHOTO > REMOVE NOISE** from the drop down menu. Click on the **GRAININESS > REDUCE GRAININESS** to make changes to your image. The Reduce Graininess box will appear. Move the slider bar to make changes to the image.



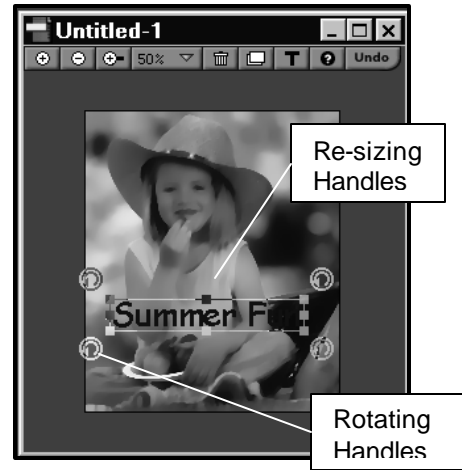
21. Click on the **MOIRE > REMOVE MOIRE** to reduce the diagonal line pattern that sometimes appears on scanned images. The **REMOVE MOIRE PATTERN** box will appear. You may adjust the smoothness of the lines in the image as well as the angle of the lines. Click **OK** when you have completed the desired changes. Click on the **JPEG > CLEAN UP JPEG** to remove the small colored boxes that appear in some JPEG images. Click **OK** when you have completed the desired changes. Click the **DONE** tab to finish.



22. To add text to your image, click on the **T** in the image menu bar or click on the **SPECIAL EFFECTS > ADD TEXT** from the drop down menu. The Text Tool box will appear. Type your text in the box on the left side of the Text Tool box.
23. Change the **text font** by clicking on the down arrow to the right of the font name box. Choose the desired font. Choose the **alignment** of the text by clicking in the button of the desired alignment style. Change the **font size** by clicking in the **Size** box and entering the desired font size. Click in the **Color** box to change the font color. The **Color Picker** box will appear. Choose a **font color** from the Color Swatches in the top of the box or choose a custom color from the **Available Colors** at the bottom of the box. To change the transparency of the text, move the slider bar at the bottom of the box. Click **OK** when you have completed making changes to the text.



24. The text will appear on the image. You can move the text by clicking inside the text box and dragging the box to a different location. The mouse changes from a single arrow to a four point arrow when moving the text. The text can be stretched by dragging any of the eight re-sizing handles on the text box. Rotate the text by clicking and dragging the circular handles on the text box. To make additional changes such as text color, font size, etc., either double click on the text, click on the **T**, or click on **SPECIAL EFFECTS > ADD TEXT** to open the **Text Tool** box.



25. To save the image as a **JPEG** file, click on the **SAVE & SEND > EXPORT** from the drop down menu. Click on the **EXPORT > OTHER EXPORT** button. The **EXPORT** box will appear. Choose a specified folder on the hard drive or **3 1/2" floppy (A:)** then name the image in the **FILENAME** box. Click on the down arrow in the **SAVE AS** box and choose **JPEG**. Click **OK** to save the image. The **JPEG OPTIONS** box appears. Click **OK** to continue converting the image to **JPEG** format. Click **DONE**.

