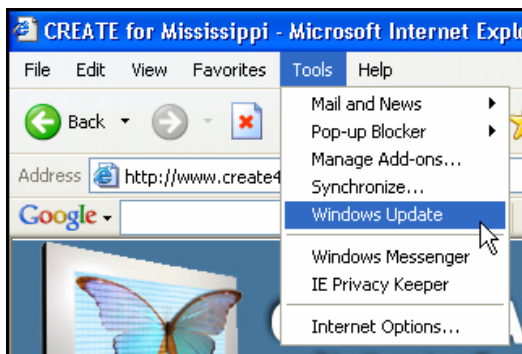


## Windows: Using Microsoft Update

*Microsoft Update* is a new Web site that helps users update *Microsoft Windows* and many other *Microsoft* programs that are installed on computers, such as *Microsoft Office 2003*, *Microsoft Windows* and *Microsoft Server* families all in one place. *Microsoft Update* will replace *Windows Update* for end users.

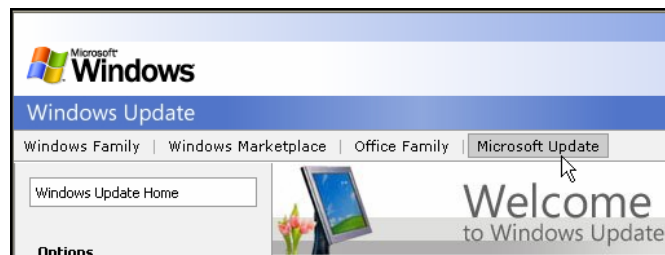
### Installing Microsoft Update

1. To use the new Web site, open *Internet Explorer*, which is typically located on the *Windows Desktop*.



2. Click **TOOLS > WINDOWS UPDATE** located on the main menu of *Internet Explorer*.

3. Click the **MICROSOFT UPDATE** hyperlink located in the horizontal menu of the Web page.



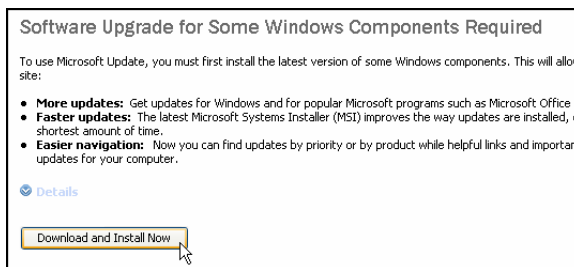
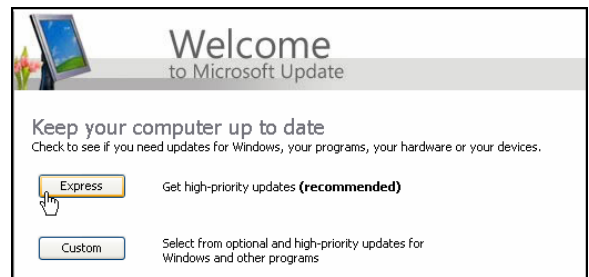
4. On the next page that loads in a new *Internet Explorer* window, click the **START NOW** button.



- Click the **CONTINUE** button after reviewing the license agreement.

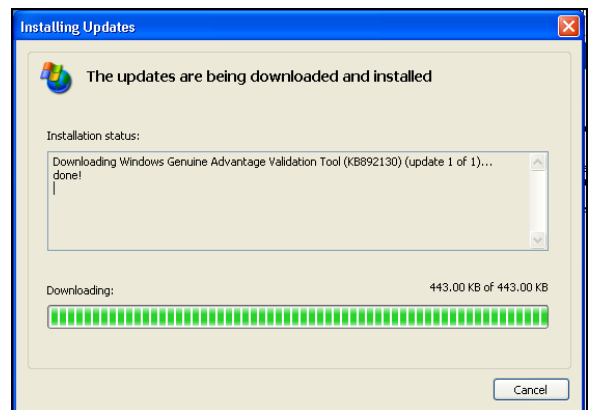


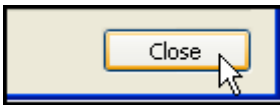
- Click the **EXPRESS** button to get high-priority updates. Note, at this point, if *Microsoft Genuine Validation* has not been done on the computer, the validation process will take place before the *Microsoft Update*.



- If validation is required, users will see a screen like the image on the left. Click the **DOWNLOAD AND INSTALL NOW** button to start the validation process.

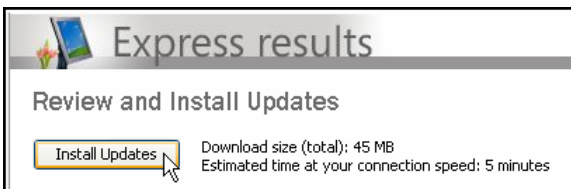
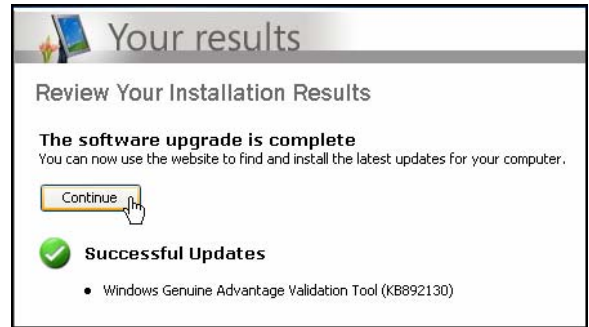
- Users should see a tool installed on the computer in the manner shown in the image on the right.





9. After the tool installs, click the **CLOSE** button.

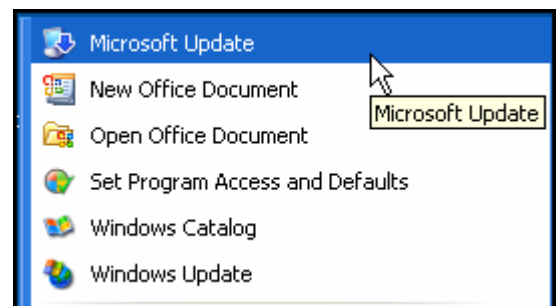
10. Next, click the **CONTINUE** button to return to the *Microsoft Update* home page.



11. The site will start scanning the computer to see if updates are needed for the eligible *Microsoft* software. After the scan completes, click the **INSTALL UPDATES** button to install the updates.

12. After the updates are downloaded and installed, users may have to restart the computer. If so, click the **RESTART NOW** button to reboot the computer. If not, click the **CLOSE** button to finish the update process.

13. Users can return to the *Microsoft Update* Web site by clicking the newly installed menu item located on the Start Menu. *Microsoft Updates* can also be automatically installed using the *Windows* Automatic Update feature.



**Contact Information:**

Voice: 662-325-5009

Web site: <http://www.create4ms.org>