

Windows AntiSpyware: Basics

Installing *Windows AntiSpyware*

Microsoft Windows AntiSpyware is a security technology that helps protect users from spyware and other malicious forms of software. The benefit of this software is that it provides real-time protection as opposed to other Spyware removal programs (*Spybot*, *AdAware*, etc.). Users can perform manual or automatic scans of computers with this program. This product does require machines that have *Windows 2000*, *XP*, or *2003* and *Internet Explorer 6.0* or higher.

1. To download this software, navigate using your favorite web browser to the following URL, <http://www.microsoft.com>. This is the Web site for the manufacturer of this free software program.

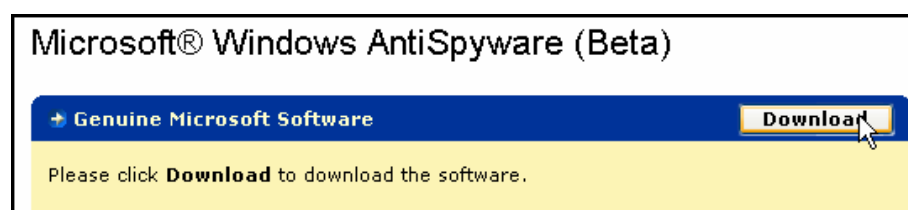


2. Scroll down the page to the Popular Downloads section. Click the hyperlink labeled *Windows AntiSpyware (beta)*.

3. Users will have to get the machine validated using the *Microsoft Genuine Validation* tool. If validation is required, click the **CONTINUE** button to start the validation process.



4. After the validation process completes, click the **DOWNLOAD** button on the next window.

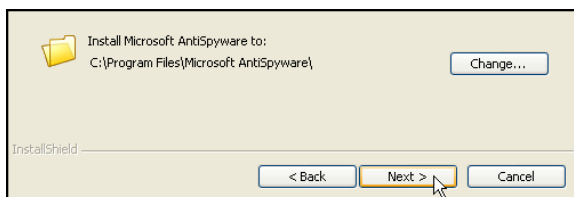
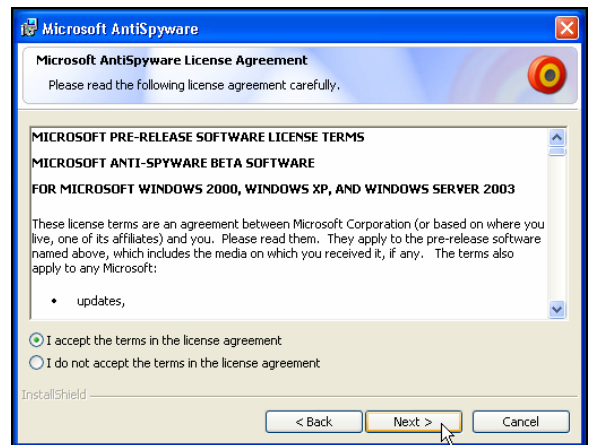


- Once the file is downloaded to the computer, double-click the installer to initiate the installation process.



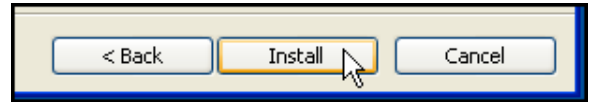
- Click the **NEXT button** to start the installation process.

- Select the radio button next to *I accept the terms in the license agreement*. Click the **NEXT button** to agree to the Software License Agreement for this software. This step is a standard procedure used by all software companies.



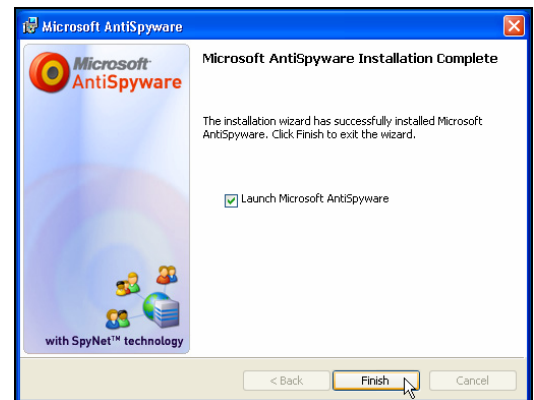
- Click the **NEXT button** to accept the default installation location.

9. Click the **INSTALL** button to finalize the installation process.



Configuring *Microsoft AntiSpyware*

1. To start the configuration process, check the box next to *Launch Microsoft AntiSpyware*.
2. Click the **FINISH** button to complete the installation.

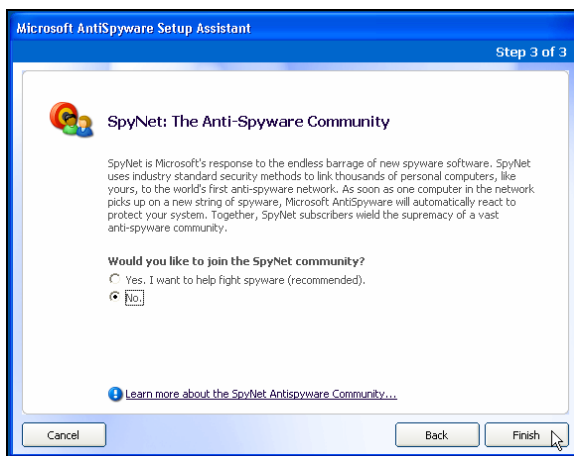
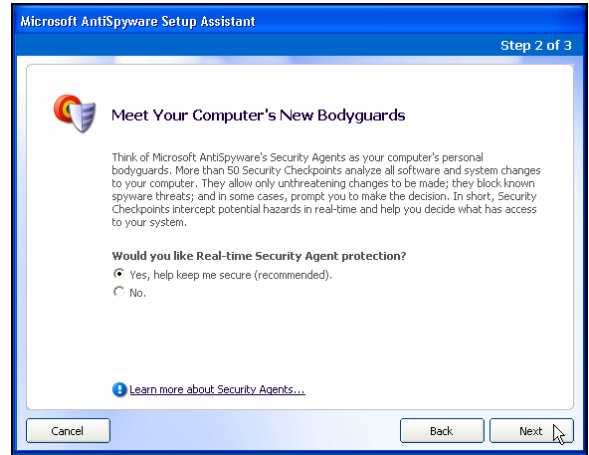


3. Click the **NEXT** button to start the Setup Assistant. This will configure the product for updates, real-time protection, and a system scan.

4. Click the **YES** radio button to allow automatic updates. Click the **NEXT** button to go to Step 2.



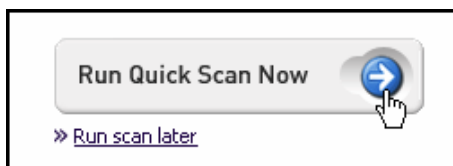
- Click the **YES** radio button to enable real-time security agent protection. Click the **NEXT** button to go to Step 3.



- Click the **NO** radio button to not join the SpyNet community. Click the **FINISH** button to finish the setup.

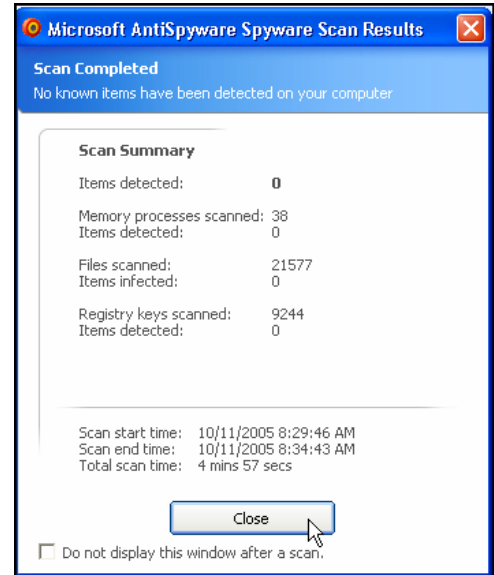
Manual Scans with *Microsoft AntiSpyware*

- Click the **Microsoft AntiSpyware** shortcut located either on the *Windows Desktop* or *Start Menu*.



- Click the **RUN QUICK SCAN NOW** button.

- At the end of the manual scan, users should see a summary. If users do not wish to see this summary, select the checkbox next to *Do not display this window after a scan* before clicking the **CLOSE** button.

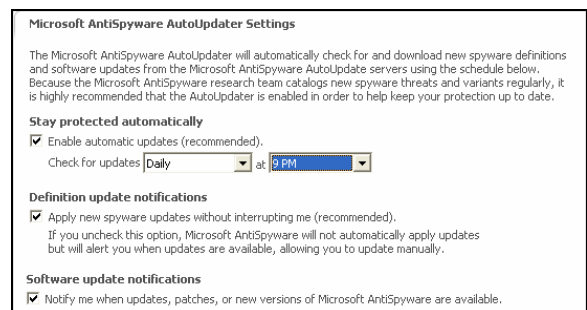


Options with *Microsoft AntiSpyware*

- In *Microsoft AntiSpyware*, click **OPTIONS > SETTINGS** from the main menu.



- This window will allow users to change AutoUpdater settings and other program settings.



Contact Information:

Voice: 662-325-5009

Web site: <http://www.create4ms.org>